

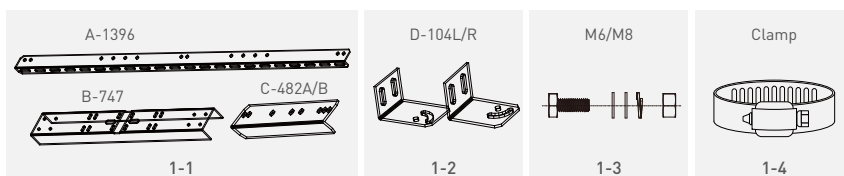
NPB-400P

Double Arm Side of Pole/ Wall Mount

Thank you for purchasing Newpowa products. NPB-400P mounting kits are designed for up to 400W (Two 100/200W solar panels) at an tilt angle from 0° - 90°.

SPECIFICATIONS

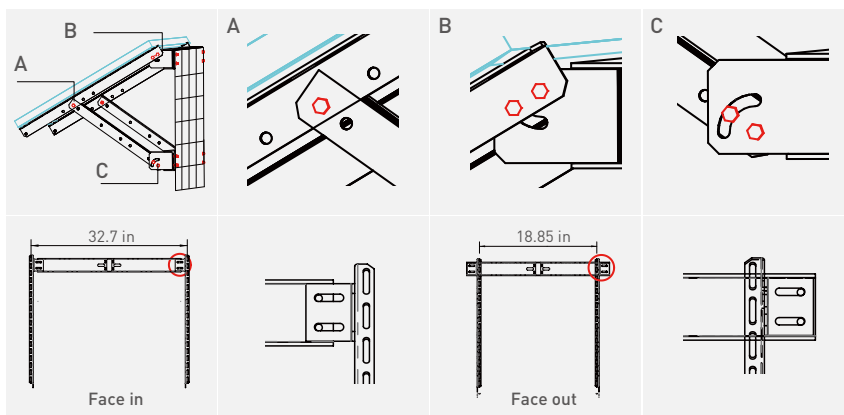
Mounting Type	Double Arm Side of Pole/Wall Mount
Module Type	Specifically designed to work with Newpowa Solar panels, but can be adapted for use with other panels
Number of Modules	Mounts 2 Panels
Setting Angle	0°-90°
Wind Load	Designed to withstand wind speeds of 90mph
Snow Loading	1.1kN/m ²
Warranty	1 Year



KIT COMPONENTS

Diagram	Component	Material	Surface Treatment	Quantity	Dimensions
1-1	Fixed Bracket	Aluminum Alloy	N/A	2/2/2/2	A-1396=55×1.97×1.1in, B-747=29.4×3.3×1.9in C-482A/B=19×1.7×1.1/19×1.6×1in
1-2	Fixed Bracket	Aluminum Alloy	N/A	2/2	D104L/R=4.1×3×2.5in
1-3	Bolts	Stainless Steel	N/A	4/18	M6=6×18mm, M8=8×20mm
1-4	Clamp	Stainless Steel	N/A	4	Clamp=1×7/8×5in

MOUNTING DIAGRAM



Note:

When using this kit with another brand of panel you may need to change the module bolts to suit the mounting holes on the panel. M8 & M6 bolts are provided with this kit for your preference.

